

100 BOISBRIAND



4 1/2 • 5 1/2 • 6 1/2

UN PROJET SIGNÉ:



EMPLACEMENT



VUES PLANS



(001) vue gauche (rue clair)



(002) vue façade rue de boisbriand

VUES PLANS

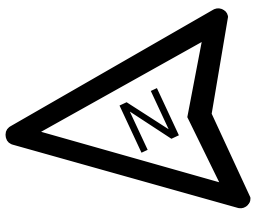


(003) vue droite



(004) vue arrière

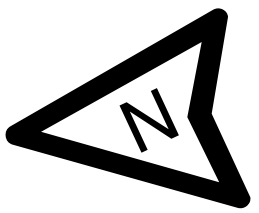
PLAN RDC



PLAN 2^e ÉTAGE



rue de boisbriand

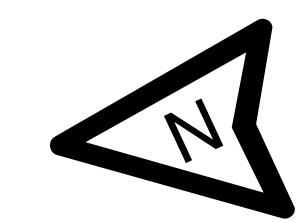
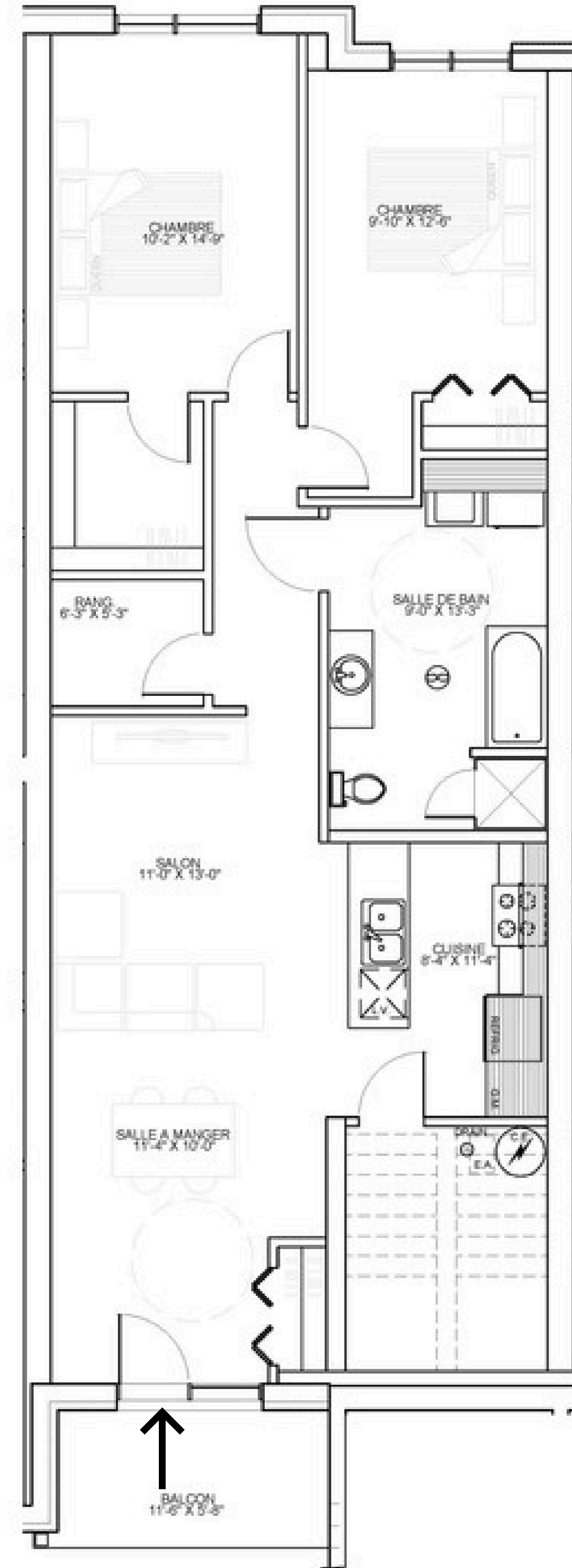


101·4 1/2



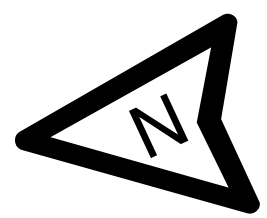
1100 P²

102
•
4 1/2



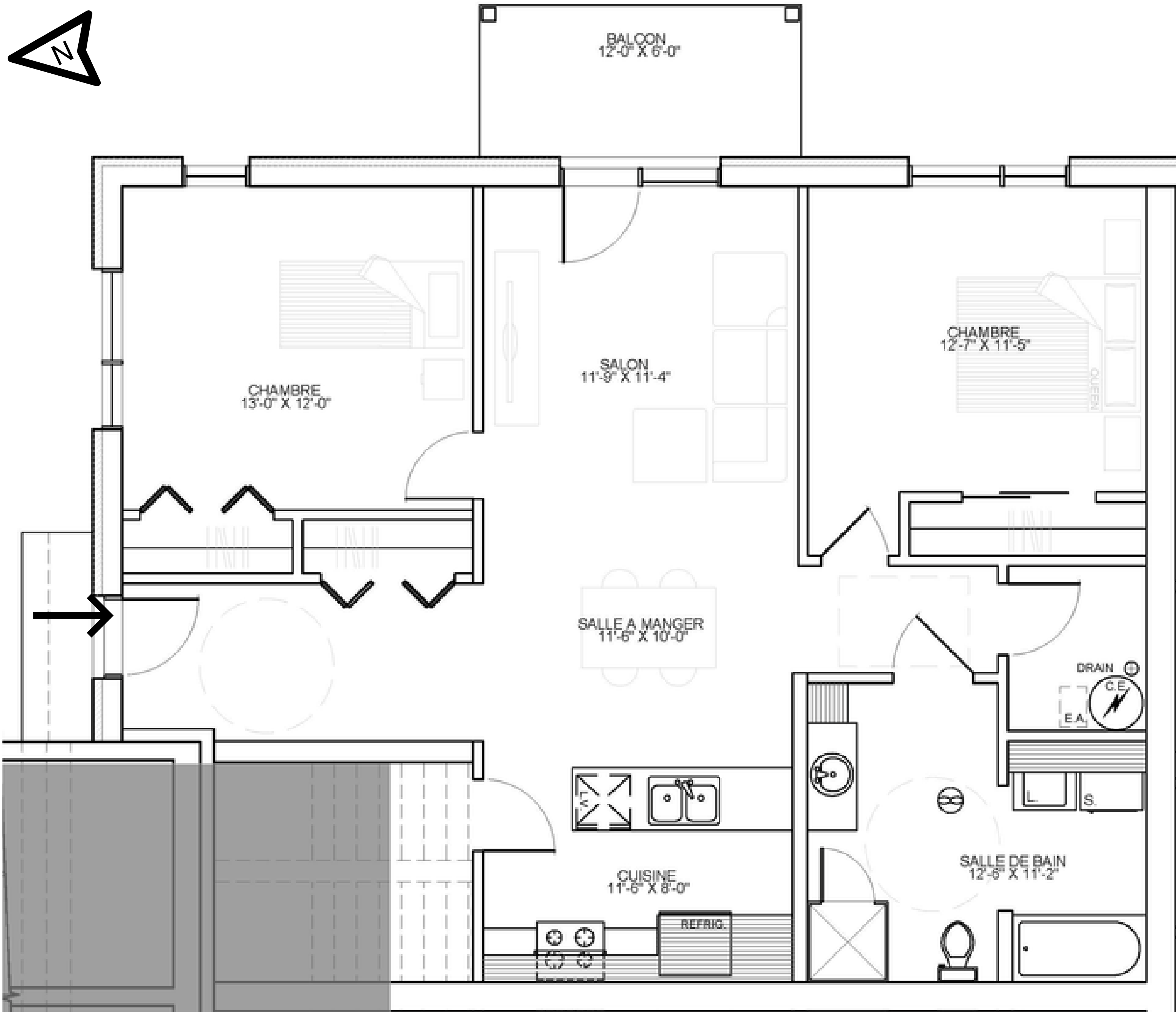
1112 P²

103
•
4 1/2



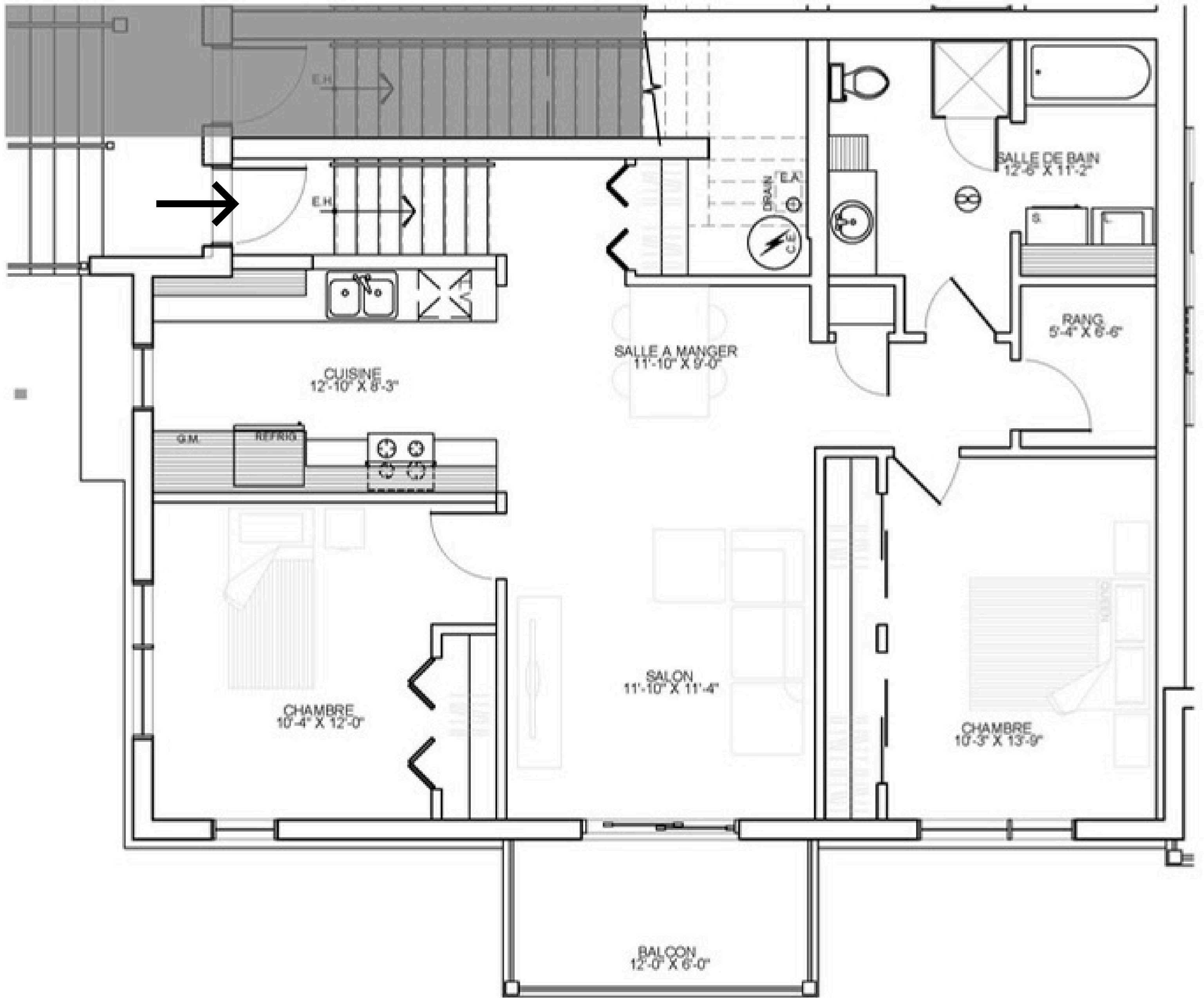
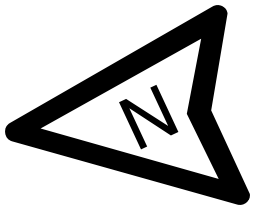
1112 P²

104.4 1/2



1100 P²

201·4 1/2



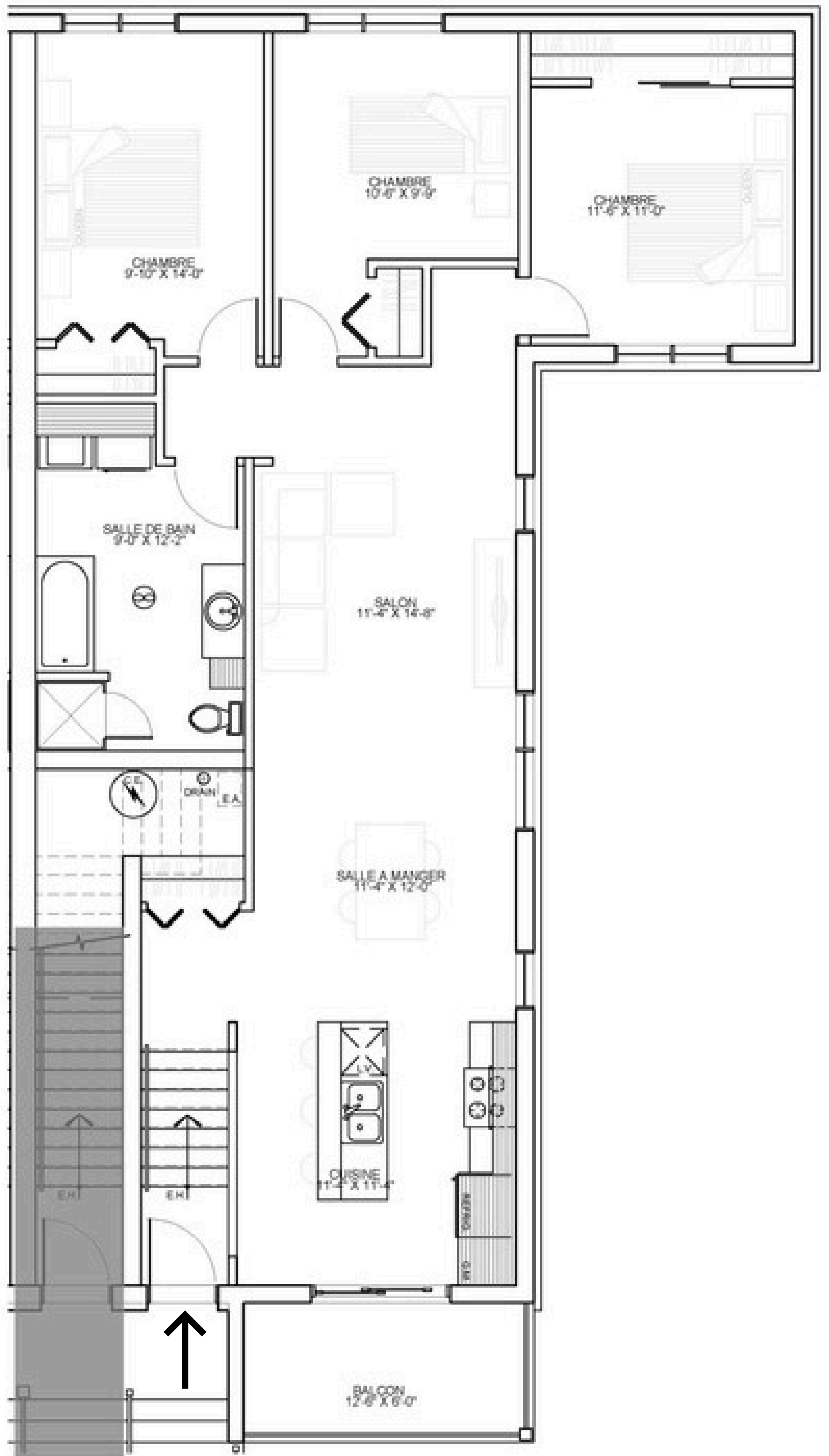
1045 P²

202
•
4 1/2



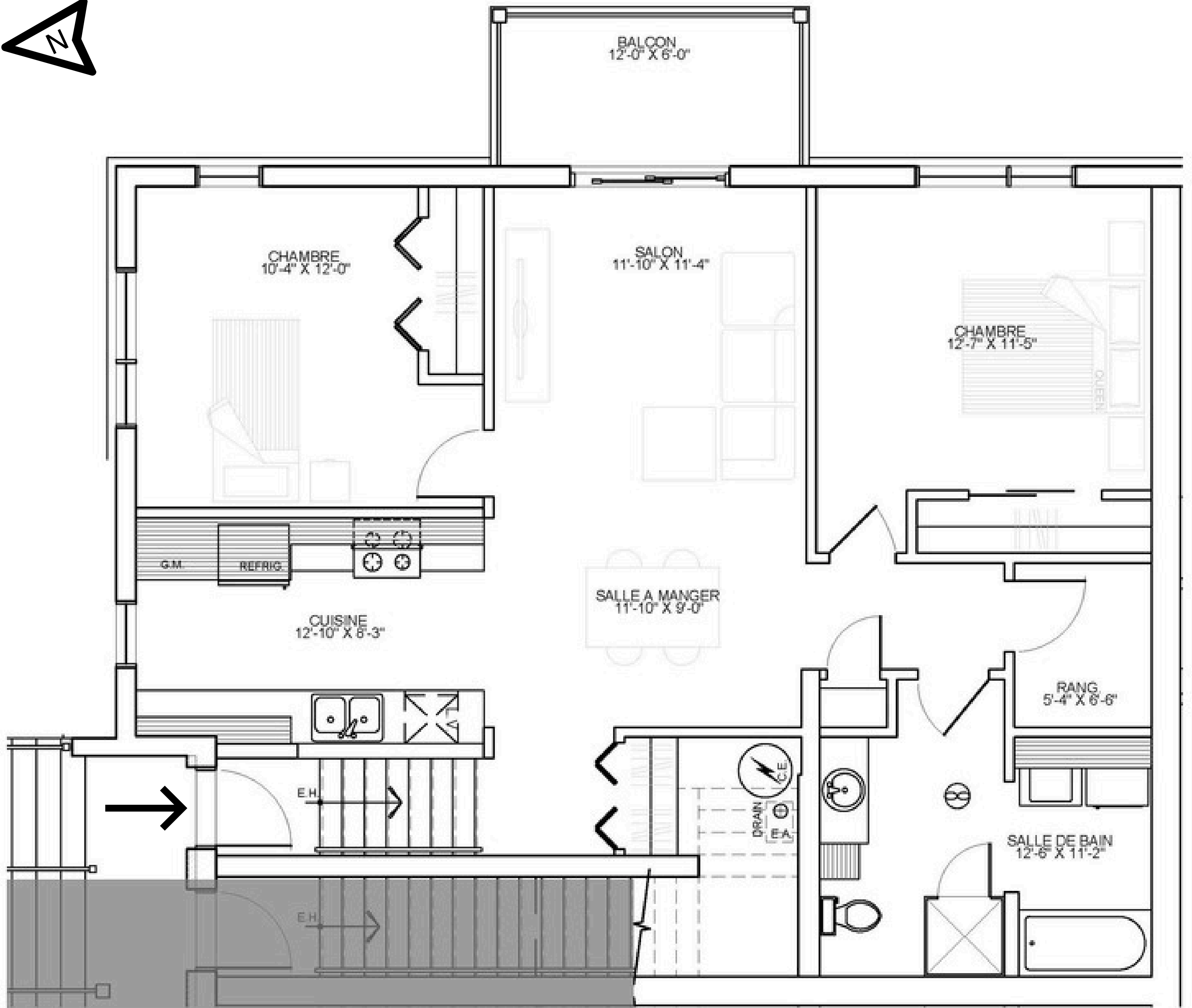
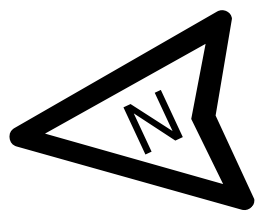
1062 P²

203
•
5 1/2



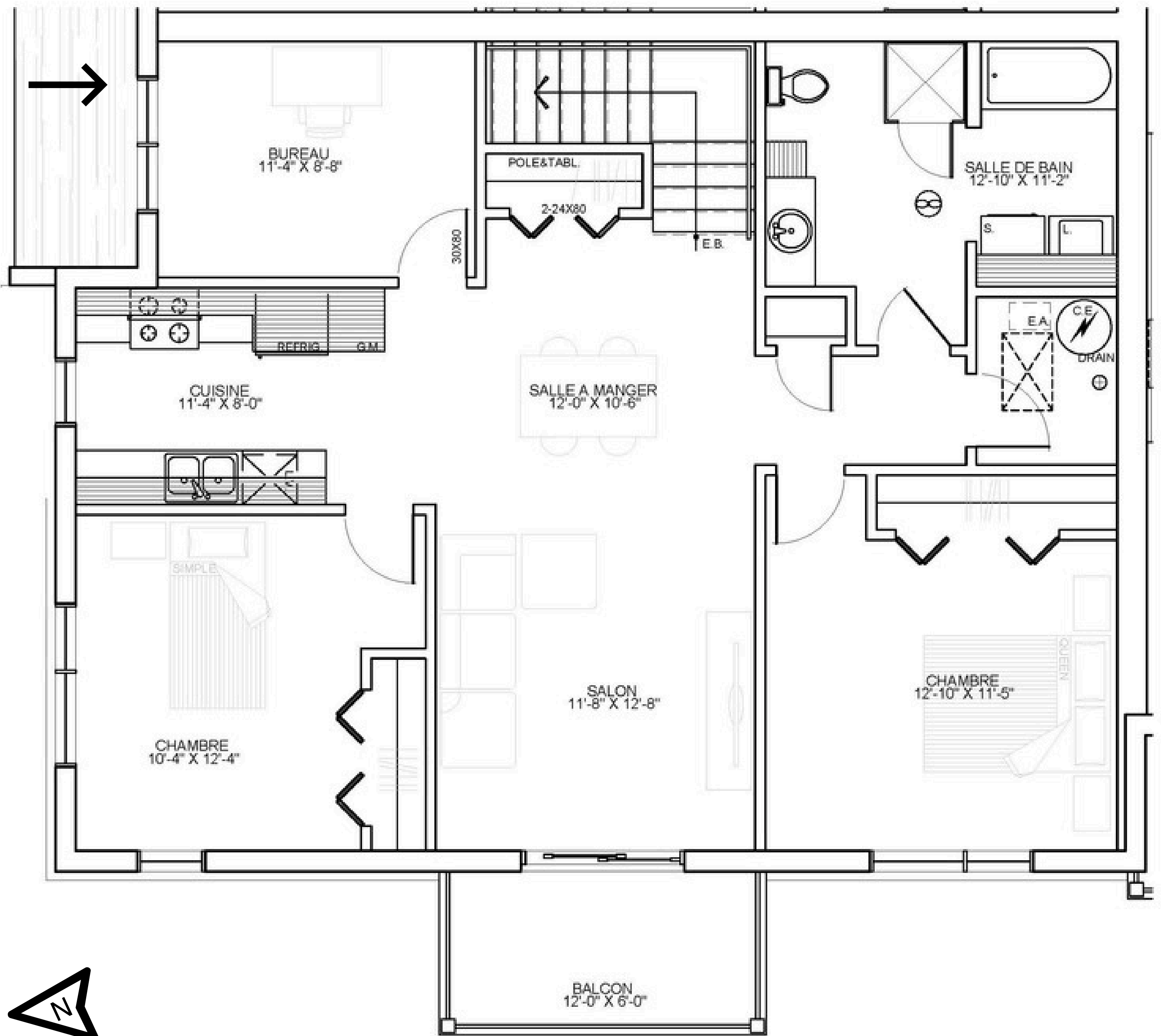
1233 P²

204·4 1/2



1045 P²

301.5 1/2



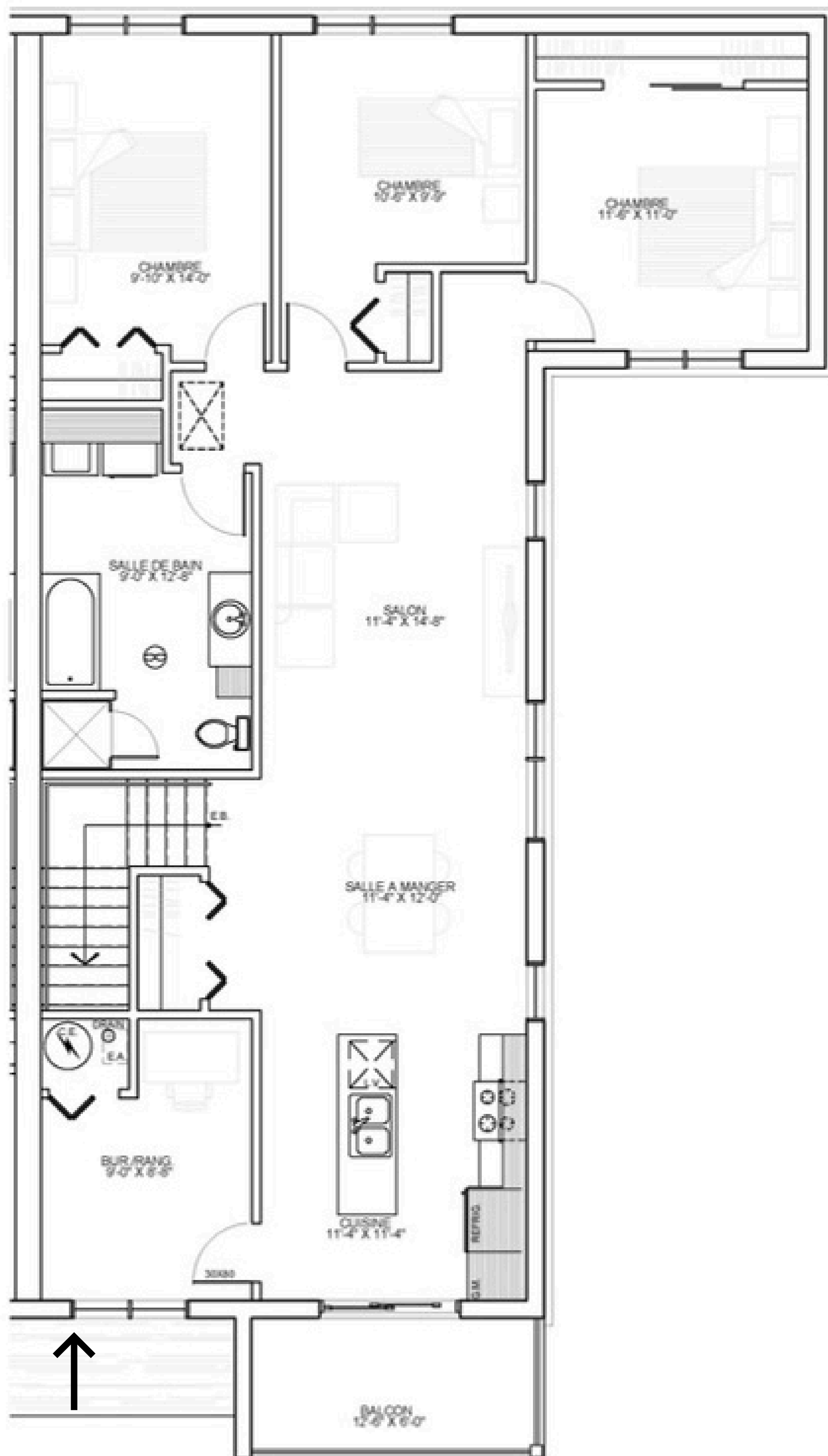
1108 P²

302
•
5 1/2



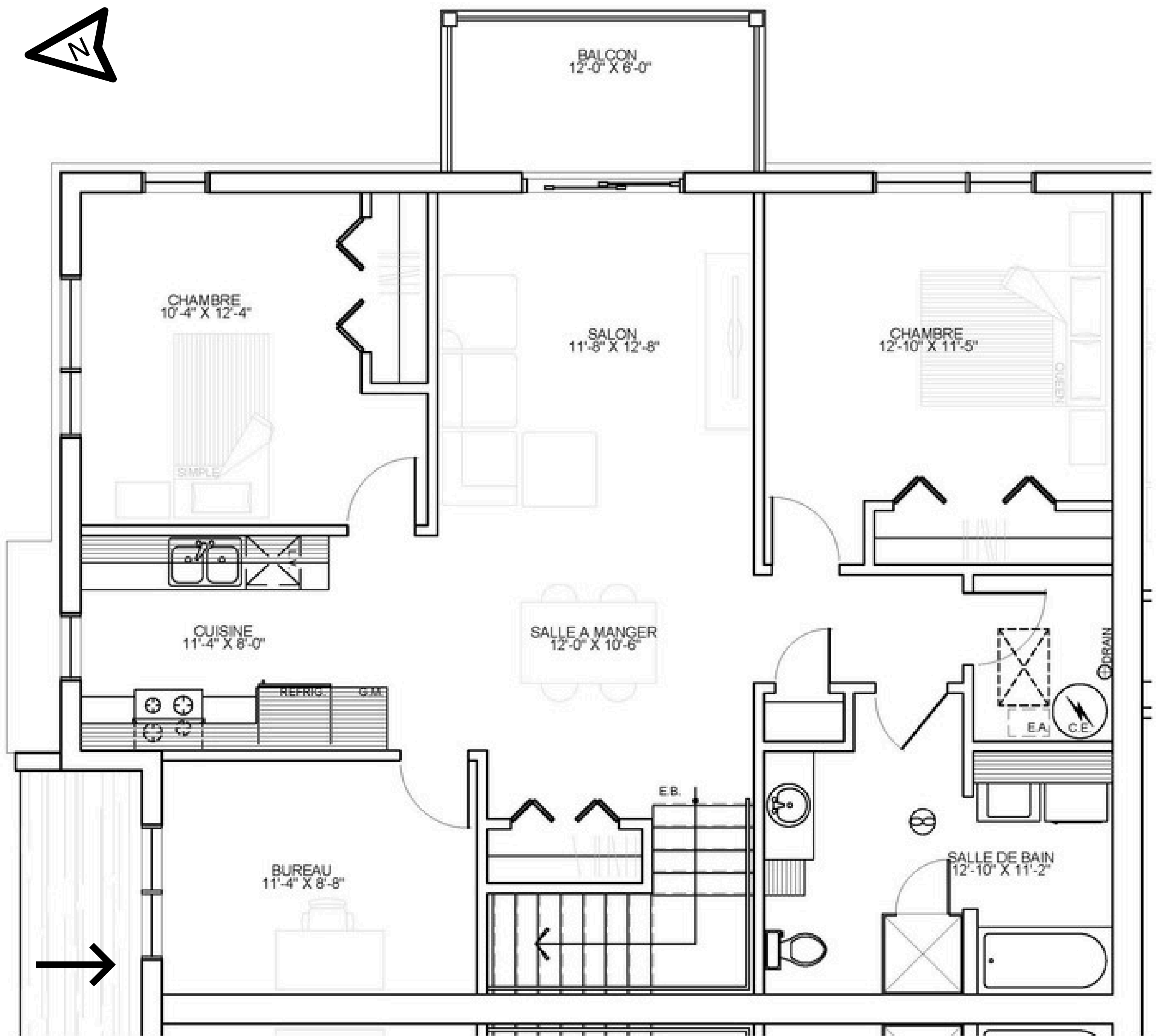
1120 P²

303
•
6 1/2



1280 P²

304·5 1/2



1108 P²

LISTE DES LOGEMENTS

RDC

- #101, 4 ½ GAUCHE AVANT : 1100 PI CA
- #102, 4 ½ CENTRE : 1112 PI CA
- #103, 4 ½ DROITE : 1112 PI CA
- #104, 4 ½ GAUCHE ARRIÈRE : 1100 PI CA

2^E ÉTAGE

- # 201, 4 ½ GAUCHE AVANT : 1045 PI CA
- # 202, 4 ½ CENTRE : 1062 PI CA
- # 203, 5 ½ DROITE : 1223 PI CA
- # 204, 4 ½ GAUCHE ARRIÈRE : 1045 PI CA

3^E ÉTAGE

- # 301, 5 ½ GAUCHE AVANT 1108 PI CA
- # 302, 5 ½ CENTRE : 1120 PI CA
- # 303, 6 ½ DROITE : 1280 PI CA
- # 304, 5 ½ GAUCHE ARRIÈRE : 1108 PI CA

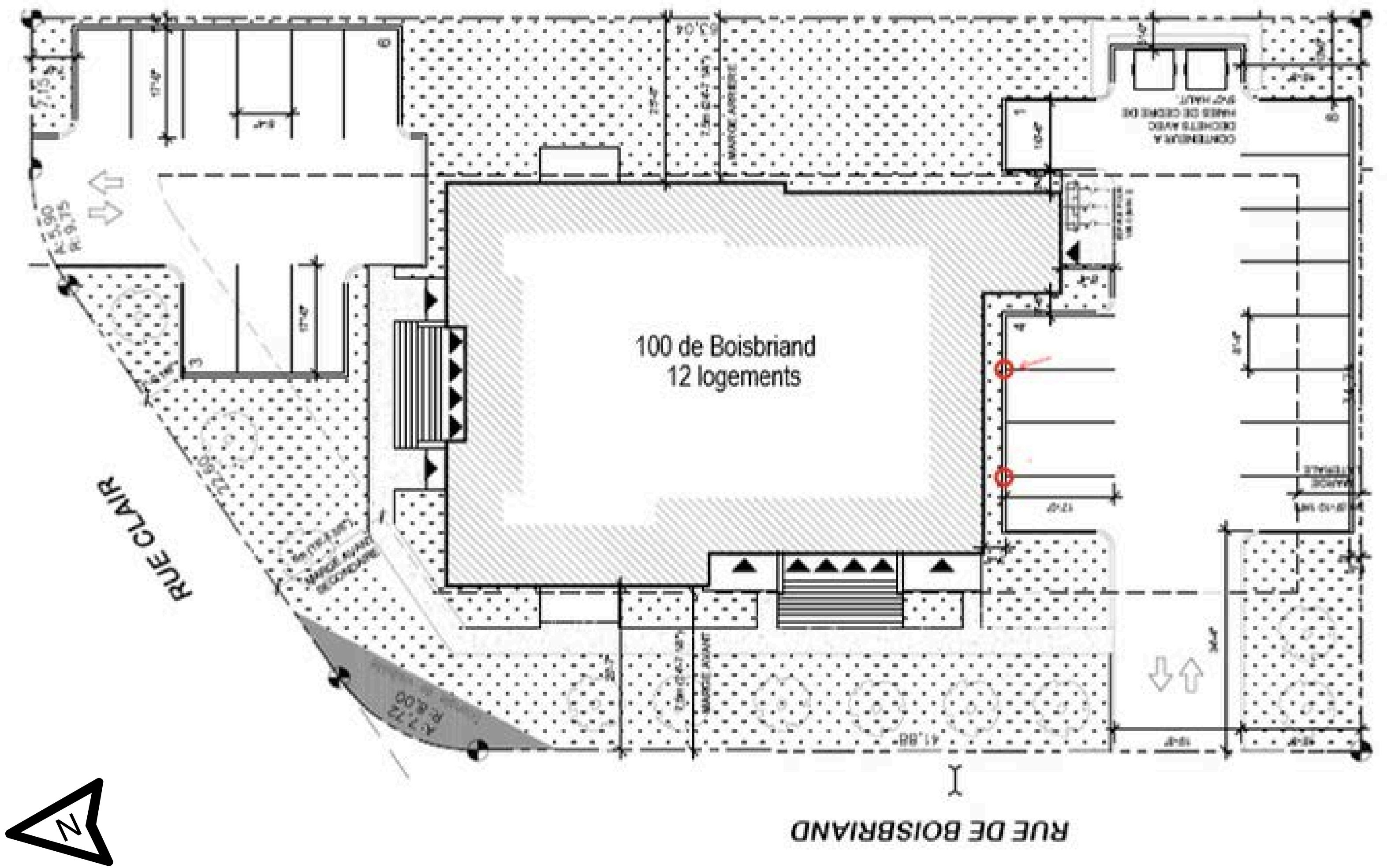
12 UNITÉS

SPÉCIFI CATIONS

- ASPIRATEUR CENTRAL
- THERMOPOMPE (FROID ET CHAUD)
- REMISE INCLUSE 4X8
- UN STATIONNEMENT INCLUS, POSSIBILITÉ D'UN 2^E (+20\$/MOIS)
- POSSIBILITÉ DE BORNES DE RECHARGE POUR VÉHICULE (\$)
- ÉLECTRICITÉ NON INCLUSE
- NON MEUBLÉ

*

IMPLAN TATION



100⁰ BOISBRIAND



819-478-8338

LOCATION@GESTIONFAUVEL.COM



GESTION

FAUVEL Inc.